

EMINENCE NOW

MAYOR'S MESSAGE

April, 2014

Welcome readers to the first ever newsletter from the City of Eminence. I hope that you will find some useful information within this newsletter and that it will help to keep you more informed about happenings within your City. The different references to various ordinances are only excerpts from the full text. You are welcome to stop by and ask for full copies of any that interest you or go to our website at www.eminencekentucky.com to find copies of some of our ordinances and minutes (both present and prior). While you are on our website, don't forget to sign up for our Code Red which is an emergency alert system that will call you when impending weather is afoot or when we have events going on in the community. If you do not have access to do this yourself, feel free to contact someone at City Hall and they will be glad to get you in the call system. With spring weather upon us, it is important to have as much prior knowledge of weather threats as possible.

I am so proud to be a part of what is happening within the City and I encourage your participation and interest, whether it is attending our council meetings which occur on the second Monday of each month at 6:15 or by serving on a board or committee by simply calling and letting me know of your interest or just calling with an idea or a concern you might have.

I am happy to welcome CVS Pharmacy to our community and want to celebrate all of our existing businesses and industries. We could not do without you and you are such a vital part of our community. As you can see from construction which is going on around town, we are about to welcome McDonald's, United Citizens Bank and Eminence Apothecary into our fold.

If you haven't visited our City Park on Hillcrest Drive, please do so. We have two pavilions, two children's play structures, swings, basketball courts, corn hole, tennis, and just a pleasant atmosphere for you to hang out in while your kids have a good time. Please help us to keep it clean. Additional plans are in the works for other fun activities at the park.

I can always be reached by leaving a message at City Hall at 845-4159 or on my cell at 743-1012. I will always listen to your concerns. I am here to serve you, so don't hesitate to contact me or any of the Council.
Drane Stephens, Mayor

City of
EMINENCE
Founded 1851



CITY ADMINISTRATION

Drane Stephens
Mayor

Council Members:
E. Lee Ann Armstrong

Treva Browning
Leo Mason

Danny Meadows
Tom Shroyer

Polly Troxell

William H. Brammell
City Attorney

Sandra A. Doane
City Clerk /Treasurer

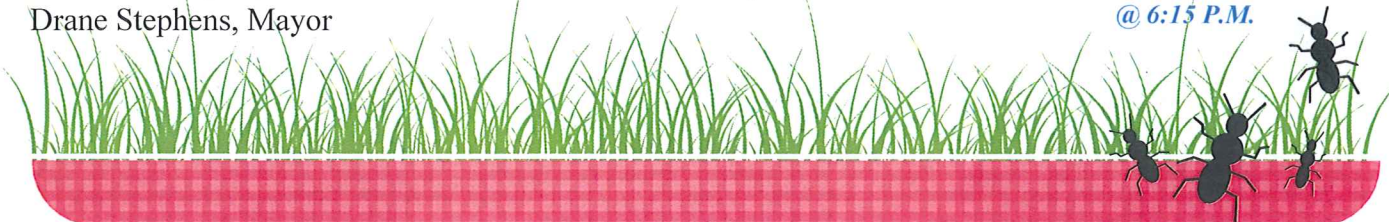
Carey Duncan
Police Chief

William Smith
Public Works Director

Gary Lucas
Fire Chief

CITY COUNCIL MEETINGS—SECOND MONDAY OF EACH MONTH

@ 6:15 P.M.



SEWER EXPANSION PROJECT:

The City is in the process of updating the current sewer treatment plant to allow for more capacity. Bids have been let on this project with no award of bid being made. The City has received a 647,000.00 CDBG grant and a \$350,000.00 HB 608 grant to do this work. Other funds needed will be taken from local reserve funds or a low interest loan. No additional increase in water and sewer rates are expected other than the normal annual increase of 1-1/2 percent. Any questions, please feel free to give us a call.

RECYCLING???

Why not give it a try?

You have two options:

1. You can bring your recycling to the City Hall Parking Lot and put it in the designated dumpster or
2. You can contract direct with Rumpke to have it picked up at the curb for \$5.50 per month which includes an 18 gallon recycling bin.

EMPLOYEE SPOTLIGHT

Public Works Director William Smith has been with the City since 1976 and became its Public Works Director in 1992. Bill is married to the former Kelly Cook. Bill has three children; Kim Boyer, Cheryl Evans, and Aaron Smith. His step-daughter is Amanda Mathis. He also has seven grandchildren. Bill is a lifetime resident of Eminence having graduated from Eminence High School in 1971. His parents are the former Fred and Gladys Smith.



In addition to his job with the City, Bill has always been very active in assisting with youth sports activities, especially baseball; having served as an assistant coach for many years. He has always been willing to help a citizen in need if at all possible.

Bill has seen many changes throughout the years. He has a wealth of knowledge of our water and sewer system and we are honored that he has chosen to work for the City all these years.

In his spare time, Bill loves to golf and can be seen at the course knocking around a few balls. He is very proud of his family and his community.

Please help us in congratulating Bill.

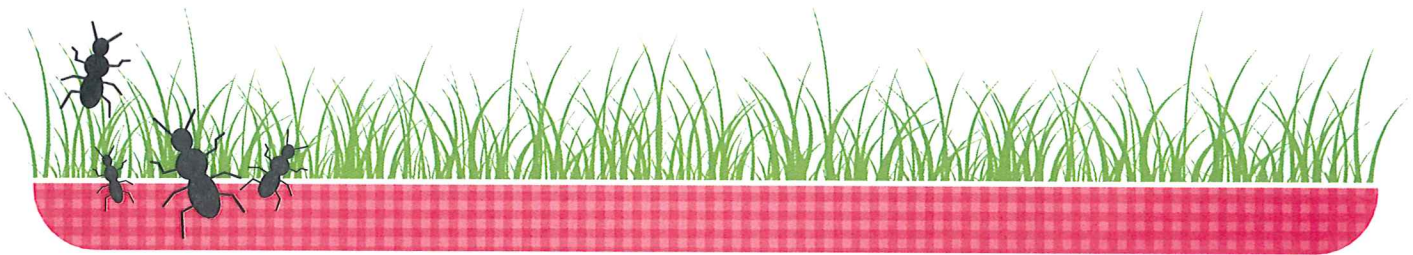
Residential Trash Service Guidelines

Trash must be bagged and placed in a Rumpke 95-gallon cart. Additional trash must be bagged and placed on top of the cart. If you need a second cart, call Rumpke at (800) 678-6753. There is no charge to use the second cart, carts remain property of Rumpke.

Rumpke will not service 50 gallon drums or nonstandard Rumpke containers. All trash must be bagged and cardboard boxes must be broken down flat.

Trash carts should be placed at the curb no more than 24 hours before collection day and removed within 24 hours of collection day. Carts left at the curb in violation of this policy may be removed by City personnel and returned only upon payment of \$5 administrative fee to the City. These items are not acceptable trash: dirt, concrete, drywall, studs, construction material, fencing, liquids (including but not limited to paints, thinners, pesticides, chemicals, oils), tires, medical (biohazard needles, oxygen tanks, chemo diapers, etc.), propane or gas tanks, swing sets, and patio doors. Rumpke has construction and cleanup container available to rent. Call (800) 678-6753.

“Continued on Next Page”



“Continued From Page 2”—Residential Trash Service Guidelines

Rumpke will collect one large (junk) item (no more than 75 lbs.) on your regular trash collection day. Do not place concrete, construction or demolition material out as junk pick-up. Refrigerators, freezers and air conditioners must have CFU's removed and tagged by licensed technicians. If you have any questions about acceptable junk items, please call Rumpke at (800) 678-6753.

Yard waste, including grass, leaves, limbs, vines, small shrubs and weeds, is collected on trash day. Limit 15 large bags or four, 30 gallon trash cans. Bags and bundles should weight no more than 20 pounds. All tree limbs and branches must be no more than six inches in diameter, no longer than four feet and must be tied and bundled (not thrown loose at the curb). Double-bag heavy clippings or wet leaves. No loose dirt, fencing, decking, tree stumps, swing sets, etc.

Spring is Almost Here—Time to Mow and Clean Up Your Property

The City's property ordinance states as follows:

Section 151-014-1 (a) Grass and/or weeds shall not be allowed to grow in excess of six (6) inches in height.

Section 151.026 –1 (b) A person is guilty of abandoning a vehicle when he/she leaves a vehicle on any public property within the city under such circumstances as to cause such vehicle reasonably to appear to have been abandoned.

Section 151-015-1 (b) Allowing litter, including dead limbs, grass, tires, junk or debris to accumulate on property is a violation and failure to maintain residential premises.

To view Ordinance No. 2009-005—An Ordinance of the City of Eminence, Kentucky Regulating Maintenance of Structures and Real Estate, Visit Our Website at www.eminencekentucky.com

Upcoming Office Closing Dates:

April 18, 2014—Good Friday—Closing @ Noon

May 26, 2014—Memorial Day— Closed All Day

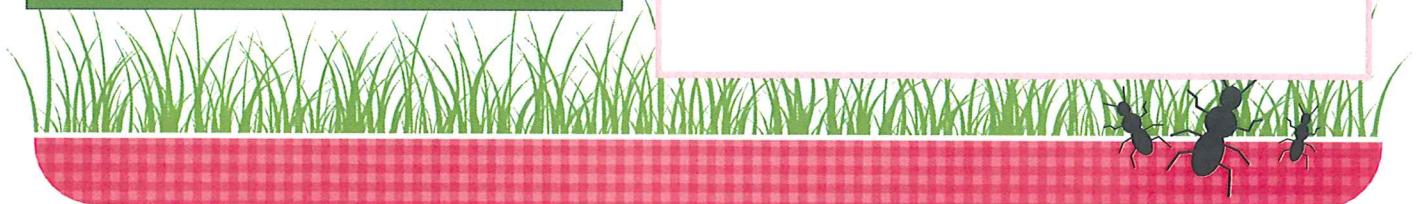
July 4, 2014—Independence Day—Closed All Day

COMING SOON:

Water/Sewer/Trash Payments to be Accepted Online—Watch our Website at www.eminencekentucky.com for More Information to Follow.

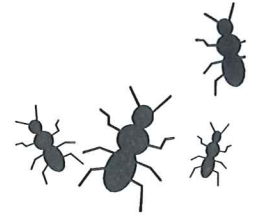
TIME OF BILLING FOR WATER, SEWER AND TRASH SERVICES; WHEN PAYMENT DUE; PENALTY

Bills for water service, sewer service and trash pickup shall be computed monthly on the basis of the meter reading, and shall be mailed to the user of such facilities by the City Clerk, or such other person as may be designed for that purpose from time to time, on or about the twenty-fifth day of the calendar month immediately following each meter reading period. All bills shall be due and payable in full and without discount at such place, or places as may from time to time be stated in such bills, on or about the tenth day of any month in which the bills are mailed; provided, however, that if the tenth day of any month shall be a Saturday, Sunday or a legal holiday, payment shall be deemed to have been made on time if made on the next succeeding secular day which is not a legal holiday. To any bill not paid within the time herein prescribed, there shall be added a penalty equal to ten percent (10%) of the face amount of the bill, and such penalty shall be paid at the same time the bill is paid. No extensions to the foregoing payment schedule shall be granted.



City of Eminence
P. O. Box 163
Eminence, KY 40019
502-845-4159
www.eminencekentucky.com

Pre-Sort Standard
U.S. Postage
Paid
Eminence, KY
Permit #2



Clip & Save This List of Helpful Numbers

Eminence Dispatch	911
Police Administration	845-4744
Fire Administration	845-7600
Circuit Court	845-2868
District Court	845-7551
County Clerk	845-5705
County Judge	845-5707
Eminence City Hall	845-4159
Eminence Water Works	845-4268
Eminence Independent School	845-5427
Henry County Library	845-5682
Health Department	845-2882
Child Support Enforcement	845-7655
Kentucky Utilities	800-981-0600
LG&E	800-331-7370
Planning and Zoning	845-7760
Property Valuation Administration	845-5740
Rumpke (Trash & Recycling)	800-678-6753

Mark Your Calendar for these important dates!

Eminence Day—August 9, 2014

DJ @ The Park—Dates TBD

Highland Renaissance Festival -
Weekends—June and July

Trick or Treat on Main—Date
TBD

Halloween @ Highland Renaissance—Date TBD

Light Up Eminence—December
6, 2014

